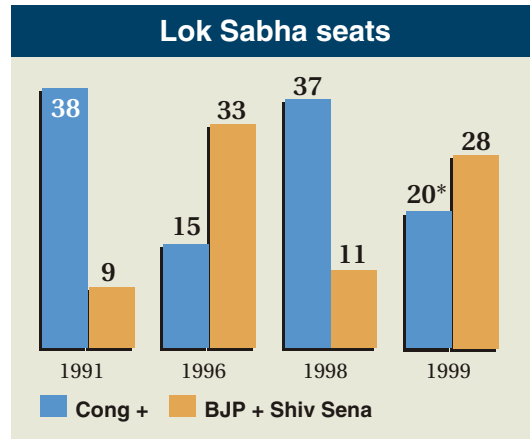


# MAHARASHTRA

How the State voted in the 1999 Lok Sabha election and what this means for 2004

**Congress dominance in Maharashtra has faced challenges in the 1990s**



**Vote share**

	1991	1996	1998	1999
Cong +	48.4	34.8	50.4	55.9*
BJP + Shiv Sena	29.7	38.6	42.2	38.0

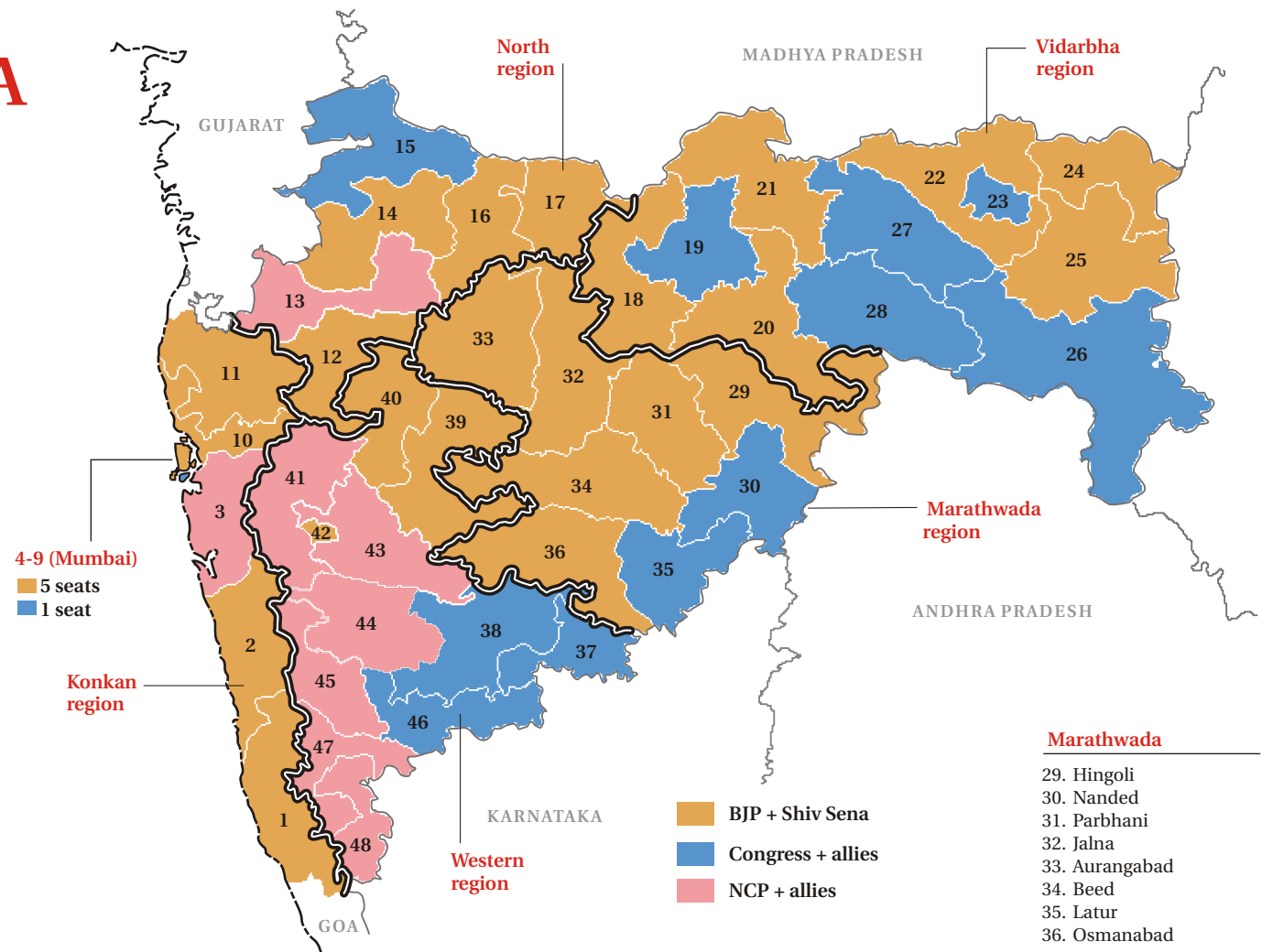
\* The figures for 1999 combine the seats won and the vote shares of the Congress-led alliance and the NCP-led alliance.

Note: CPM won one seat in 1991; The Congress' ally RPI won 4 seats in 1998; The Congress' ally, the BBM won one seat while the NCP allies — PWP, JD(S) and RPI(A) — won one seat each in 1999.

**This time, the Congress-NCP alliance has retained Dalit and Muslim support, but Marathas are leaning towards the saffron alliance**

Caste / Community	Congress + NCP	BJP + Shiv Sena
Upper Caste	22	71
Maratha-Kunbi	39	55
OBC	37	54
SC	60	26
ST	51	39
Muslims	79	16

Note: Figures in percentages. Source: Pre-poll opinion survey, March 2004 as reported by NDTV.



### Marathwada

- 29. Hingoli
- 30. Nanded
- 31. Parbhani
- 32. Jalna
- 33. Aurangabad
- 34. Beed
- 35. Latur
- 36. Osmanabad

### Vidarbha

- 18. Buldhana
- 19. Akola
- 20. Washim
- 21. Amravati
- 22. Ramtek
- 23. Nagpur
- 24. Bhandara
- 25. Chimur
- 26. Chandrapur
- 27. Wardha
- 28. Yavatmal

### Western

- 37. Solapur
- 38. Pandharpur
- 39. Ahmednagar
- 40. Kopergaon
- 41. Khed
- 42. Pune
- 43. Baramati
- 44. Satara
- 45. Karad
- 46. Sangli
- 47. Ichalkaranji
- 48. Kolhapur

### Konkan

- 1. Rajapur
- 2. Ratnagiri
- 3. Kolaba
- 10. Thane
- 11. Dahanu

### Mumbai

- 4. Mumbai South
- 5. Mumbai South Central
- 6. Mumbai North Central
- 7. Mumbai North East
- 8. Mumbai North West
- 9. Mumbai North

### North

- 12. Nashik
- 13. Malegaon
- 14. Dhule
- 15. Nandurbar
- 16. Erandol
- 17. Jalgaon

**It would take a strong swing against Congress + NCP to push it below the majority mark**

What would be the case if...	Seats in 2004 elections	
	BJP + SS	Cong. + NCP
It is a repeat of the 1999 Lok Sabha elections in 2004	7	38
Congress+NCP lose 4% of combined vote	12	33
Congress+NCP lose 6% of combined vote	17	28
Congress+NCP lose 8% of combined vote	23	22
Congress+NCP lose 10% of combined vote	27	18

Note: The starting point of the calculation is the combined vote share of the Congress, NCP, JD(S), RPI and RPI(A) in the last Lok Sabha election. These parties have already formed up a pre-poll alliance for the coming election.